

2018 STORMWATER CALENDAR



Photo courtesy of Vulcan Park and Museum, photographer Rob Lagerstrom

The City of Birmingham and the Jefferson County Stormwater Programs are pleased to provide you with this 2018 Stormwater Calendar. Inside, you will find a collection of outdoor venues that reflect the history, diversity, and future of our region. Each month highlights a venue with a photo as well as a description of its unique features and attractions. The venues were chosen based upon their contributions to reducing pollution in stormwater runoff and improving water quality in local creeks and streams through their preservation, conservation, restoration, and education initiatives. We hope that this calendar will encourage you to visit the featured locations and experience the unique ways in which each portrays our past, shapes our future and contributes to our quality of life.

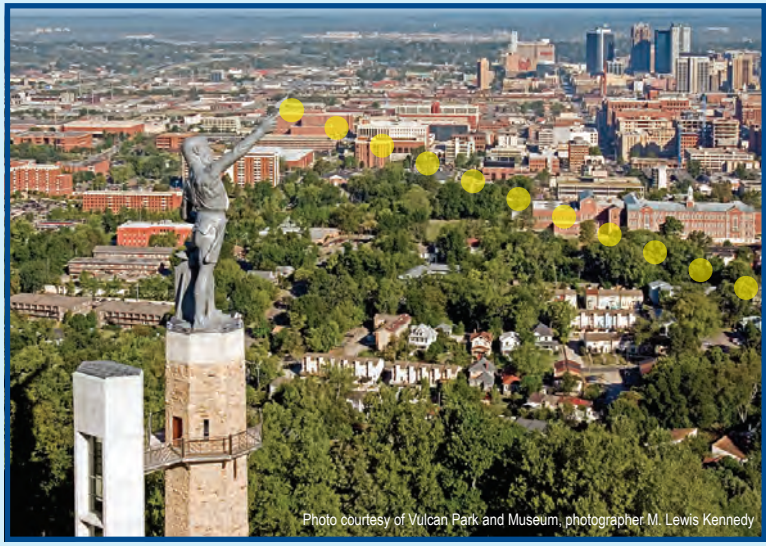
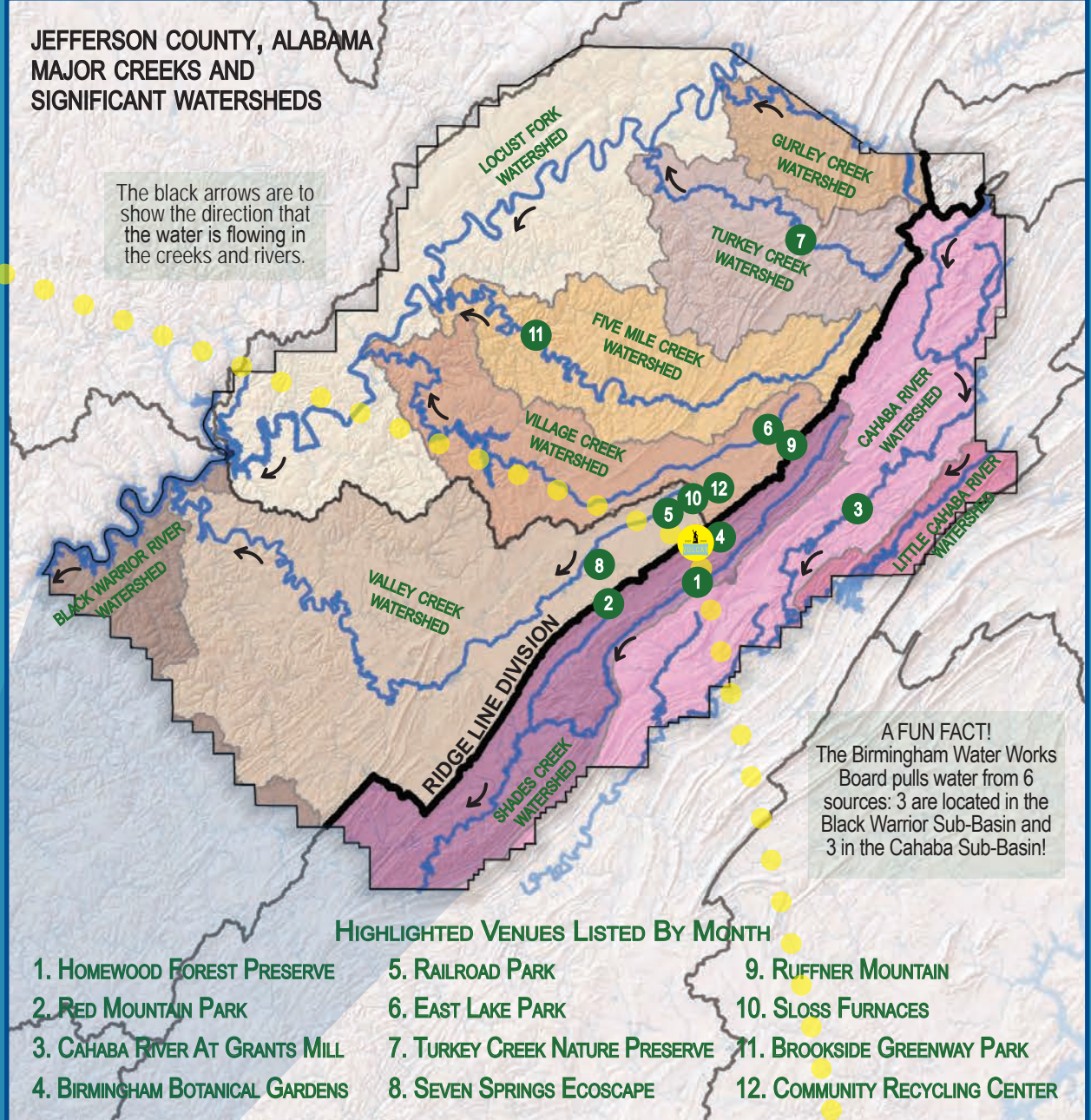
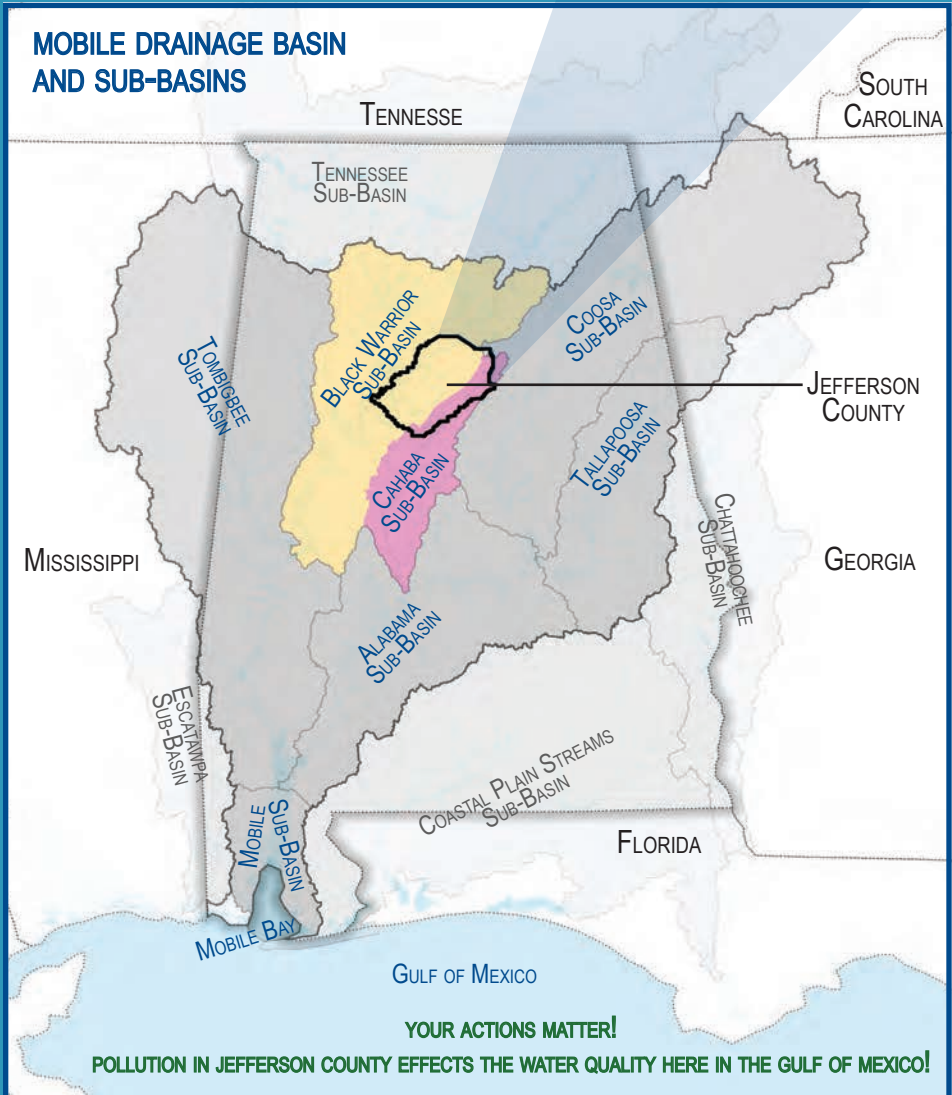


Photo courtesy of Vulcan Park and Museum, photographer M. Lewis Kennedy

Overlooking the sites where coal, iron ore and limestone were mined and a booming manufacturing sector was born, Vulcan proudly towers over the 1,119 square miles that make up the Birmingham-Jefferson County Metro Area. The abundance of clean fresh water was a crucial factor in Birmingham's dramatic rise as a mining and manufacturing center during the late 1800s. The water that enabled that growth remains a vital component to the future progress and vitality of our region. Vulcan Park sits atop Red Mountain, which is part of the Red Mountain Divide, a southern extension of the Appalachian Mountains and the Cumberland Plateau. This geological feature creates two main drainage Sub-Basins: the Black Warrior Sub-Basin and the Cahaba Sub-Basin. The Vulcan statue faces the Black Warrior Sub-Basin and the Cahaba Sub-Basin is behind Vulcan. Within these 2 major Sub-Basins are 10 Watersheds: Black Warrior River, Cahaba River, Five Mile Creek, Gurley Creek, Little Cahaba River, Shades Creek, Turkey Creek, Valley Creek, and Village Creek.



A drainage **BASIN** is a large area of land drained by rivers. Large Basins are made up of Sub-Basins. **SUB-BASINS** are made up of Watersheds. A **WATERSHED** is a land area whose elevation causes water to flow to a common waterway. Neither Basins nor Watersheds follow State or Municipal Boundaries. They are defined by mountain ridges and valleys.



VULCAN PARK AND MUSEUM

CAST IRON

VULCAN

PARK & MUSEUM
1701 Valley View Drive,
Birmingham, AL 35209
205-933-1409
www.visitvulcan.com

Vulcan Park and Museum was created to preserve and promote Vulcan as the symbol of the Birmingham region, to advance knowledge and understanding of Birmingham's history and culture, and to encourage exploration of the region. The Vulcan statue was built in 1904 as Birmingham's winning entry in the World's Fair held in St. Louis, Missouri. Vulcan, the world's largest cast iron statue standing at 56 feet tall, towers atop a pedestal with an observation deck which can be reached via 159 steps – or an elevator ride. The surrounding Vulcan Park is a 10 acre green space which includes walking trails and contains an interactive history museum. The park provides a spectacular 360° view of the surrounding area and is the site of the annual Fourth of July fireworks display, Thunder on the Mountain.

Did you know?

- 10% of the fresh water in the continental US originates or flows through Alabama in its 132,000 miles of streams!
- Alabama contains the greatest aquatic biodiversity of all our 50 states with 332 species of freshwater fish!
- Cahaba Sub-Basin contains the longest substantially free flowing river in Alabama - Cahaba River is #1!
- Black Warrior Sub-Basin contains the 2nd and 3rd longest substantially free flowing rivers in Alabama - Locust Fork #2 and Mulberry Fork #3!
- You can help gather important water quality data. Visit www.alabamawaterwatch.org to learn more!

The maps displayed on this page have been prepared by Jefferson County Department of Development Services. Any use of these maps shall be at the sole risk of the person or entity using them. Jefferson County makes no warranty, expressed or implied, as to the accuracy of the information represented herein. Source: Alabama Water Watch; Black Warrior River Watershed Management Plan; and United States Geological Survey's National Hydrography Dataset and Watershed Boundary Dataset

HOMEWOOD FOREST PRESERVE

Shades Creek Watershed (Cahaba River Sub-Basin)

Learn more about Sub-Basins and Watersheds on last page!

The Homewood Forest Preserve protects a 65 acre pocket of oak-hickory forest habitat within a developed suburban area, attracting diverse bird and reptile species. It is home to a large number of Spotted Salamanders who emerge from their burrows and cover the forest floor after warm spring rains. The Preserve is a project of The Freshwater Land Trust whose mission is the acquisition and stewardship of lands that enhance water quality and preserve open space.

Attractions:

Spotted Salamanders; overlook view; 1.5 mile walking trail; Shades Creek

Special events:

January - Friends of Shades Creek Salamander Festival (www.shadescreek.org)

Biggest threat to the watershed:

Sedimentation, nutrients from fertilizers, loss of wetland habitat

Solutions implemented:

Protecting native plant species that filter runoff from rainstorms before it reaches Shades Creek.



To report a sanitary sewer overflow call 205-942-0681.

Within the City of Birmingham call 311 to report environmental and drainage issues.

Within unincorporated Jefferson County call 205-325-5792 to report suspected water pollution; call 205-582-6555 to report illegal dumping.

JANUARY 2018

**STORMWATER TIP:
Properly maintain
your vehicles and lawn
equipment!**

If just one drop of oil leaked from each vehicle in Jefferson County, it would pollute 16 million gallons of water! That is enough water to fill 24 olympic sized swimming pools.

Oil and other vehicle fluids pollute our creeks and rivers.

Please use cat litter to soak up spills; sweep up and dispose of in the trash.

Please wash vehicles on grassy areas rather than in your driveway or on the street.

SUNDAY	MONDAY	TUESDAY	WEDNESDAY	THURSDAY	FRIDAY	SATURDAY
	1 New Year's Day	2	3	4	5	6
7	8	9	10	11	12	13
14	15 Martin Luther King Jr. Day	16	17	18	19	20
21	22	23	24	25	26	27
28	29	30	31			
			<p>NOTES: Don't forget this month is the Salamander Festival! Visit www.shadescreek.org for more information.</p>			



RED MOUNTAIN PARK

**Shades Creek Watershed
(Cahaba Sub-Basin);
Village and Valley Creek Watersheds
(Black Warrior Sub-Basin)**

[Learn more about Sub-Basins and Watersheds on last page!](#)

Whether it's zipping 40 feet above Red Mountain, navigating a bridge to a tree house, or hiking and biking on 15 miles of trails, Red Mountain Park is packed with both beauty and adventure. The 1500 acre park has successfully restored forest and stream habitats which are home to 98 bird species, and wildlife such as bobcats and crawfish.

Attractions:

Mega Zip, 15 miles of trails, 6 acre Remy's Dog Park, Hugh Kaul Beanstalk Forest, mining ruins, oral history project, overlooks

Biggest threat to the watershed:

Trash, littering, illegal dumping, invasive plants

Solutions implemented:

Gates installed to prevent illegal dumping, volunteer trash pickup events, goats used to remove invasive plants.

Photo, Jeff Newman



RED MOUNTAIN PARK

Open daily 7:00am - 5:00pm; Summer until 7 | 2011 Frankfurt Drive, 35211 | 205-202-6043 | www.redmountainpark.org

JNewman 2012

To report a sanitary sewer overflow call 205-942-0681.

Within the City of Birmingham call 311 to report environmental and drainage issues.

Within unincorporated Jefferson County call 205-325-5792 to report suspected water pollution; call 205-582-6555 to report illegal dumping.

FEBRUARY 2018

**STORMWATER TIP:
Properly transport and
dispose of trash and
recyclable materials!**

Whether accidental or on purpose, trash that blows out of vehicles or trailers becomes litter!

Litter pollutes our creeks and rivers. Prevent litter by securing all items before driving and do not toss anything out of automobile windows.

Visit www.recycleAL.org to find facilities that will accept hard to dispose of items.

Coordinate or participate in a volunteer roadside litter cleanup. Call 325-8741 to learn more.

SUNDAY	MONDAY	TUESDAY	WEDNESDAY	THURSDAY	FRIDAY	SATURDAY
				1	2 Groundhog Day	3
4	5	6	7	8	9	10
11	12	13	14 Valentine's Day	15	16	17
18	19 Presidents' Day	20	21	22	23	24
25	26	27	28			
			<p>NOTES: Register your community to participate in the Alabama People Against a Littered State's Spring Cleanup. Call 325-8741 for more information.</p>			



CAHABA RIVER AT GRANTS MILL

Cahaba River Watershed (Cahaba Sub-Basin)

Learn more about Sub-Basins and Watersheds on last page!

The Cahaba River is the longest free flowing river in Alabama, providing natural beauty, recreation, and drinking water for the Birmingham area. With 131 species of fish, 64 rare and threatened aquatic species, and the largest stand of imperiled shoal lilies in the world, the Cahaba is one of the most biologically diverse rivers in the US. The Grants Mill access (bit.ly/cahabagrantsmill) is owned by the Freshwater Land Trust and is part of the Cahaba Blueway, a river access system being created by public and private partners.

Attractions:

Canoe/kayak launch; swimming; fishing; walking trails; wildlife viewing

Speical events:

Oct.- Cahaba River Fry-Down (www.frydown.com)

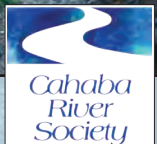
Biggest threat to the watershed:

Stormwater runoff volume and velocity; erosion, siltation

Solutions implemented:

Education, innovative stormwater practices, river bank & forest restoration

Photo, Cahaba River Society



To report a sanitary sewer overflow call 205-942-0681.

Within the City of Birmingham call 311 to report environmental and drainage issues.

Within unincorporated Jefferson County call 205-325-5792 to report suspected water pollution; call 205-582-6555 to report illegal dumping.

MARCH 2018

STORMWATER TIP:
Properly apply the correct lawn and garden products in the recommended amounts. Always follow and refer to label directions.

The quality of the soil is a major factor in how lush and green a garden grows. Test your soil today. Soil test kits are available at the AL Extension offices. Call 879-6964 to learn more.

Call a master gardener volunteer 1-877-252-GROW #3 for all of your gardening challenges.

Call the AL Extension's local plant diagnostic lab, 879-6964, to help identify pest and plant problems.

SUNDAY	MONDAY	TUESDAY	WEDNESDAY	THURSDAY	FRIDAY	SATURDAY
				1	2	3
4	5	6	7	8	9	10
11 Daylight Savings Time Begins	12	13	14	15	16	17 St. Patrick's Day
18	19	20	21	22 World Water Day	23	24
25 Palm Sunday	26	27	28	29	30 Good Friday	31
				<p>NOTES: Participate in a volunteer litter cleanup. Call 325-8741 for more information. March kicks off the FREE Lunch and Learn Seminars held at the Birmingham Botanical Gardens. Visit www.bbgardens.org/classes to learn more.</p>		



JEFFERSON COUNTY CONSERVATION DISTRICT

BIRMINGHAM BOTANICAL GARDENS

Shades Creek Watershed (Cahaba Sub-Basin)

Learn more about Sub-Basins and Watersheds on last page!

With 67.5 acres of stunning plants, flowers, trees, water features and paths, Birmingham Botanical Gardens is the region's horticultural gem. The Gardens are open every day from dawn to dusk free of charge, and welcome more than 350,000 visitors each year. Consider becoming a member to help support this local treasure!

Attractions:

Ongoing plant conservation programs and resources; 3000+ taxa of plants; 25+ interpretive/thematic gardens; 30+ works of outdoor sculpture; the only public horticulture library in the US; Meeting facilities, event venues

Special events:

Spring and Fall Plant Sale
Weekly classes, programs and events

Biggest threat to the watershed:

Stormwater runoff volume/velocity; flooding

Solutions implemented:

Stormwater infiltration, retention/
collection, biofiltration

Photo, Birmingham Botanical Gardens

To report a sanitary sewer overflow call 205-942-0681.

Within the City of Birmingham call 311 to report environmental and drainage issues.

Within unincorporated Jefferson County call 205-325-5792 to report suspected water pollution; call 205-582-6555 to report illegal dumping.

APRIL 2018

STORMWATER TIP:
Follow directions and fertilize correctly!
Any product left on the ground just gets washed off by rainfall or irrigation and pollutes our creeks, rivers and streams.

Set your spreader to the recommended application rate by adjusting its dial to the number specified in the package directions. Prevent added cleanup and don't spread fertilizer on paved areas.

Apply fertilizer when there is no chance of rain in the forecast

The label is the LAW - use only the recommended amount.

SUNDAY	MONDAY	TUESDAY	WEDNESDAY	THURSDAY	FRIDAY	SATURDAY
1 Easter Sunday April Fool's Day	2	3	4	5	6	7
8	9	10	11	12	13	14
15	16	17 Tax Day	18	19	20	21
22 Earth Day	23	24	25	26	27 Arbor Day	28
29	30					
			<p>NOTES: Reminder to shop the Birmingham Botanical Gardens Spring Plant Sale (bbgardens.org) and the Ruffner Mountain Native Plant (ruffnermountain.org) sale this month! Attend Earth Day at the Botanical Gardens on Saturday, April 21 (bbgardens.org)!</p>			



RAILROAD PARK

Valley Creek Watershed (Black Warrior Sub-Basin)

Learn more about Sub-Basins and Watersheds on last page!

There's always something going on at Railroad Park! Known as Birmingham's Living Room, this 19 acre green space planted with more than 600 trees in the heart of Birmingham celebrates the City's industrial and artistic heritage. The park incorporates materials found on site including hand cast bricks and cobblestones.

Attractions:

4 trails, outdoor gym, 2 playgrounds, 1 small skate bowl area, history wall, plaza, Boxcar Cafe, wetlands, ponds, streams

Special events:

March through October - free exercise classes
September - *Trucks by the Tracks* food festival

Biggest threat to the watershed:

Stormwater runoff volume and velocity

Solutions implemented:

Capture stormwater and biofiltrate through pond/stream system and vegetation.



To report a sanitary sewer overflow call 205-942-0681.

Within the City of Birmingham call 311 to report environmental and drainage issues.

Within unincorporated Jefferson County call 205-325-5792 to report suspected water pollution; call 205-582-6555 to report illegal dumping.

MAY 2018

**STORMWATER TIP:
Properly dispose of pet waste. It's not just a courtesy, it's also healthy and environmentally responsible**

Pet waste contains harmful bacteria which is washed by rainfall and irrigation, polluting our creeks, rivers and streams.

150,000 dogs live in our area and produce 38 tons of waste per day.

Dog waste does not fertilize the grass and should never be added to compost. Always bag it and trash it. Placing waste in plastic bags generates heat killing these pathogens.

SUNDAY	MONDAY	TUESDAY	WEDNESDAY	THURSDAY	FRIDAY	SATURDAY
		1	2	3	4	5
6	7	8	9	10	11	12
13 Mother's Day	14	15	16	17	18	19
20	21	22	23	24	25	26
27	28 Memorial Day	29	30	31		
			<p>NOTES: Participate in a volunteer litter cleanup. Call 325-8741 for more information. Attend FREE Lunch and Learn Seminars held at the Birmingham Botanical Gardens. Visit www.bbgardens.org/classes to learn more.</p>			



EAST LAKE PARK

Village Creek Watershed (Black Warrior Sub-Basin)

Learn more about Sub-Basins and Watersheds on last page!

Take a stroll or cast a line! East Lake Park, part of the Birmingham Park System, offers many options for you to enjoy. Lined with old stonework, bridges, and graced with majestic mature trees, Village Creek runs through the park which is home to 33 species of wild birds and a variety of fish. The Birmingham Park Master Plan was designed by the Olmstead brothers whose father was Fredrick Law Olmstead, the designer of New York Central Park. Birmingham Park and Recreation Board offers quality leisure service programs and open park space in a clean and safe environment.

Attractions:

60 acre park with walking trails; 45 acre manmade lake for fishing, paddle boating; swimming pool; ball fields, playground; Alabama Birding Trails venue

Biggest threat to the watershed:

Soil erosion, littering, dog waste

Solutions implemented:

Encourage visitors to properly dispose of trash and to pick up and properly dispose of dog waste.

Photo, Valerie Proctor Davis



To report a sanitary sewer overflow call 205-942-0681.

Within the City of Birmingham call 311 to report environmental and drainage issues.

Within unincorporated Jefferson County call 205-325-5792 to report suspected water pollution; call 205-582-6555 to report illegal dumping.

JUNE 2018

STORMWATER TIP:
Properly apply bug killers. Insecticides don't pick and choose. They kill all insects, even those you did not want to harm, such as our pollinators.

Integrated pest management strategies are simple: identify the pest before reacting; choose the least toxic products first; spot treat; and avoid overspray.

All insects have a purpose; many assist in helping keep plants healthy by eating bugs we consider to be bad pests.

Call the AL Extension's local diagnostic lab (879-6964 ext. 19) to help identify pest and plant problems.

SUNDAY	MONDAY	TUESDAY	WEDNESDAY	THURSDAY	FRIDAY	SATURDAY
					1	2
3	4	5 World Environment Day	6	7	8 World Oceans Day	9
10	11	12	13	14	15	16 Rain Barrel Workshop
17 Father's Day	18	19	20	21	22	23
24	25	26	27	28	29	30
			<p>NOTES: Sign up to attend the Rain Barrel Workshop taking place on June 16 at the Birmingham Botanical Gardens. Rain Barrels are available for purchase. Pre-registration with the Jefferson County Conservation District is required. Call 565-2650 for more information.</p>			



JEFFERSON COUNTY CONSERVATION DISTRICT

A newly created infographic (displayed to the right) was produced by the AWW IT assistant Jennie Powers for one of her classes at Auburn University. Jennie's infographic promotes Alabama's AWWsome aquatic biodiversity which ranks NUMBER 1 among all 50 states including freshwater fish, snails, mollusks, crayfish and turtles. The creation of this infographic initiated a greatly needed exchange among state agencies, universities and others about the estimates of our aquatic resources here in Alabama. This exchange resulted in the Geological Survey of Alabama conducting an updated GIS analysis of Alabama streams using the much-improved digital stream data from the USGS National Hydrography Dataset which contains much more detail than the previously used 1:100,000 scale data. In fact, the number of river miles increased about 55,000 miles - from more than 77,000 reported back in the 1990s to over 132,000 miles! This AWWsome infographic can be downloaded for free at: www.alabamawaterwatch.org/resources/publications.

GET INVOLVED!
Become a certified water quality monitor through the AWW Program. It is easy and FREE!
You will learn how to evaluate physical, chemical and biological characteristics of your waterways by attending a FREE water chemistry, bacteriological or stream biomonitoring training workshop, or all three!
Trainings are offered throughout the year, visit alabamawaterwatch.org to learn more.

AWW is a citizen volunteer water quality monitoring program covering all of the major river basins in Alabama. AWW uses EPA-approved monitoring plans with a community-based approach to train citizens to monitor conditions and trends in their local waterbodies.

America's Amazon

Alabama the Beautiful

10%

of the freshwater resources in the continental United States flow through or originate in Alabama.



14

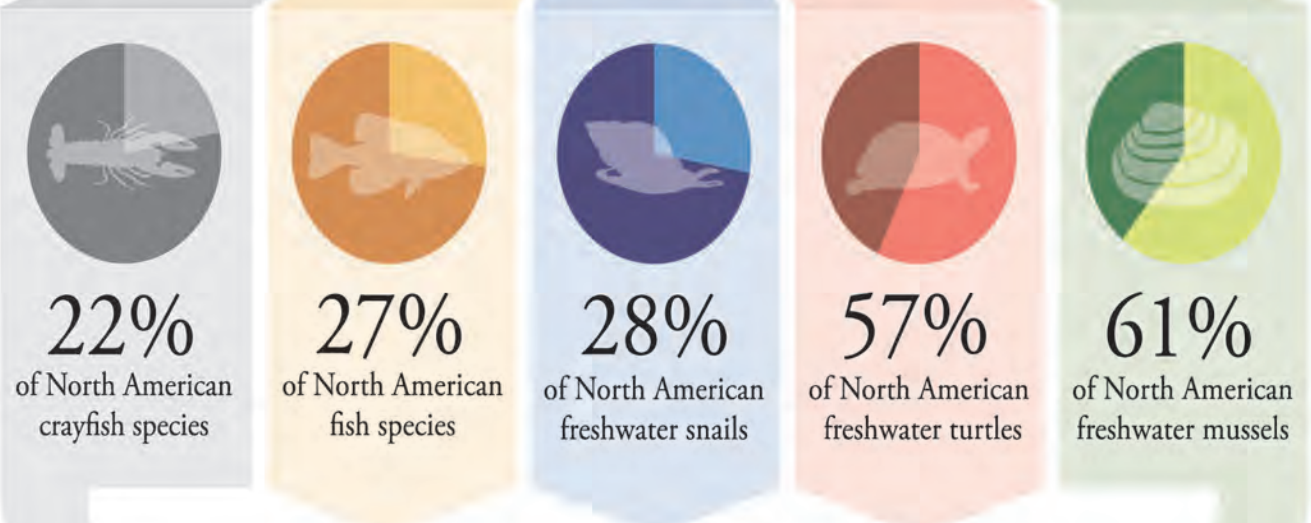
river basins form the waterways of Alabama

There are more than **132,000*** miles of rivers and streams in Alabama. That's enough to circle the earth 5 times!

Top 5 States

Freshwater Fish Biodiversity

Rank	State	# Species
1	Alabama	332*
2	Tennessee	320
3	Georgia	265
4	Kentucky	248
5	Mississippi	209



Native to Alabama

Alabama Ranks Number 1 in the U.S. for the number of freshwater crayfish, fish, snail, turtle and mussel species!



19% of the freshwater fish species in Alabama are at risk due to pollution and destruction of habitat.



Alabama Water Watch is a program in the Auburn University Water Resources Center, which receives support from the Alabama Agricultural Experiment Station and the Alabama Cooperative Extension System.

Get Involved!

Get certified as a water monitor and volunteer. Learn more at <http://alabamawaterwatch.org>

References:



Suggested Reading:

Fishes of Alabama by Herbert T. Boshchung and Richard L. Mayden

Southern Wonder: Alabama's Surprising Biodiversity By R. Scot Duncan



*Number of fish species and river/stream miles recently updated by GSA; river/stream miles updated using USGS National Hydrography Dataset (NHD) Best Resolution for Alabama (see <https://www.sciencebase.gov/catalog/item/56d68b95e4b015c3062717a>, or google 'nhd best resolution for AL' for details).

TURKEY CREEK NATURE PRESERVE

Turkey Creek Watershed (Black Warrior Sub-Basin)

Learn more about Sub-Basins and Watersheds on last page!

If you are looking for natural wonders, Turkey Creek Nature Preserve is a must see! The 466-acre Preserve boasts some of the most unique beauty found in the Southeast and is home to 7 federally protected species, including 3 critically endangered fish species. Educational programs are offered to promote preservation, and restoration projects are conducted to improve and protect this sensitive ecological system.

Attractions:

5 trails; overlooks; swimming; catch and release fishing

Special events:

July - Float Your Boat Summer Festival

Biggest threat to the watershed:

Stormwater runoff volume and velocity; sediment and its effects on the creek bed structure and habitat.

Solutions implemented:

Removing non-native plants, reducing stormwater runoff on the property, encouraging proper trash disposal.



SEVEN SPRINGS ECOSCAPE

Valley Creek Watershed (Black Warrior Sub-Basin)

Learn more about Sub-Basins and Watersheds on last page!

Once a drinking water source for travelers on their way to Birmingham, Seven Springs feeds Nabors Branch which flows into Valley Creek on property owned by Faith Apostolic Church. In 2002, it was discovered that this waterbody was a habitat for the endangered Watercress Darter, making it only the 3rd such population known to exist. Through a joint partnership with the Freshwater Land Trust, US Fish and Wildlife, Samford University, and the Southern Environmental Center, Faith Apostolic Church agreed to protect the waterway and allow Seven Springs Ecoscape to be constructed on its property. Today Seven Springs Ecoscape is a beautiful serene park whose elements help protect water quality.

Attractions:

Ecoscape, garden, walkway, art

Biggest threat to the watershed:

Stormwater runoff volume and velocity

Solutions implemented:

Pervious walkways, native plants

Photo, Charles Cleckler

To report a sanitary sewer overflow call 205-942-0681.

Within the City of Birmingham call 311 to report environmental and drainage issues.

Within unincorporated Jefferson County call 205-325-5792 to report suspected water pollution; call 205-582-6555 to report illegal dumping.

AUGUST 2018

**STORMWATER TIP:
Properly dispose of
unused items in the trash
and cover trash cans
to keep out wind and
animals.**

Secure all items before driving and do not toss anything out of the windows.

Whether accidental or on purpose, trash that blows out of vehicles or trailers becomes litter. Litter on the ground can be washed by rainwater into the storm drainage system and carried untreated to local creeks and streams.

Coordinate or participate in a volunteer roadside litter cleanup. Call 325-8741 to learn more.

SUNDAY	MONDAY	TUESDAY	WEDNESDAY	THURSDAY	FRIDAY	SATURDAY
			1	2	3	4
5	6	7	8	9	10	11
12	13	14	15	16	17	18
19	20	21	22	23	24	25
26	27	28	29	30	31	
			<p>NOTES: Attend FREE Lunch and Learn Seminars held at the Birmingham Botanical Gardens. Visit www.bbgardens.org/classes to learn more.</p>			



JEFFERSON COUNTY CONSERVATION DISTRICT

RUFFNER MOUNTAIN

MINERS JUNCTION

5-MILE TRAIL

QUARRY TRAIL

HOLLOW TREE

RIDGE VALLEY

Shades and Village Creek Watersheds (Cahaba and Black Warrior Sub-Basins)

Learn more about Sub-Basins and Watersheds on last page!

Ruffner Mountain offers a unique opportunity to hike through 1038 acres of lush native forest and wildlife habitat nestled in the midst of downtown Birmingham while discovering the City's historic industrial past. Its mission is to advance the understanding of ecology in a rapidly changing world, and it strives to raise ecological awareness as Birmingham's premier resource for urban nature education.

Attractions:

17 hiking trails; historic mining sites; quarries; mineral rail line

Special events:

April – Native plant sale

Importance of conservation:

Ruffner Mountain is one of the largest urban nature preserves in the US.

Biggest threat to the watershed:

Soil erosion, dumping, littering, stormwater runoff volume and velocity

Solutions implemented:

Removing non-native plants, planting diverse native species to reduce sediment, flooding and erosion.

Photo, Ed Bruchac



To report a sanitary sewer overflow call 205-942-0681.

Within the City of Birmingham call 311 to report environmental and drainage issues.

Within unincorporated Jefferson County call 205-325-5792 to report suspected water pollution; call 205-582-6555 to report illegal dumping.

AUGUST 2018

**STORMWATER TIP:
Properly dispose of
unused items in the trash
and cover trash cans
to keep out wind and
animals.**

Secure all items before driving and do not toss anything out of the windows.

Whether accidental or on purpose, trash that blows out of vehicles or trailers becomes litter. Litter on the ground can be washed by rainwater into the storm drainage system and carried untreated to local creeks and streams.

Coordinate or participate in a volunteer roadside litter cleanup. Call 325-8741 to learn more.

SUNDAY	MONDAY	TUESDAY	WEDNESDAY	THURSDAY	FRIDAY	SATURDAY
			1	2	3	4
5	6	7	8	9	10	11
12	13	14	15	16	17	18
19	20	21	22	23	24	25
26	27	28	29	30	31	
			<p>NOTES: Attend FREE Lunch and Learn Seminars held at the Birmingham Botanical Gardens. Visit www.bbgardens.org/classes to learn more.</p>			



SLOSS FURNACES

Village Creek Watershed (Black Warrior Sub-Basin)

Learn more about Sub-Basins and Watersheds on last page!

Take a peek into Birmingham's industrial past through Sloss' web of pipes and tall smokestacks, enjoy a fun event, or create your own art at one of our hot metal workshops! This historic 32 acre blast furnace, used to make iron 1882-1971, is a center for community events, civic life, and for the creation, display, and interpretation of metal art. Stroll through Grandmother's Garden which showcases heirloom vegetables, herbs, and flowers, such as would have been grown and harvested by families living in Sloss Quarters.

Special events:

July- Sloss Fest
2nd Saturday monthly - Garden tours

Biggest threat to the watershed:

Soil erosion; graffiti; broken windows

Solutions implemented:

Native plants and trees to reduce soil erosion; plants to clean soil and air; and education to instill pride and a sense of ownership.



Open Tuesday - Saturday 10:00am - 4:00pm; Sunday 12 - 4 | 20 32nd Street North, 35222 | 205-254-2025 | www.slossfurnaces.com

To report a sanitary sewer overflow call 205-942-0681.

Within the City of Birmingham call 311 to report environmental and drainage issues.

Within unincorporated Jefferson County call 205-325-5792 to report suspected water pollution; call 205-582-6555 to report illegal dumping.

OCTOBER 2018

**STORMWATER TIP:
Compost yard waste into
free mulch!**

Fallen leaves quickly decompose, making natural fertilizer and mulch. Mulch smothers weeds, helps soil retain moisture, and reduces soil erosion.

Chop up fallen leaves with your lawnmower. The leaf bits will decompose and provide free fertilizer.

Winterize your plants and natural areas by applying your fallen leaves as mulch.

Now is the best time to plant trees, shrubs, and other additions to the landscape.

	SUNDAY	MONDAY	TUESDAY	WEDNESDAY	THURSDAY	FRIDAY	SATURDAY
		1	2	3	4	5	6
7		8	9	10	11	12	13
14		15	16	17	18	19	20
21		22	23	24	25	26	27
28		29	30	31 Halloween			
				<p>NOTES: Make plans this month to attend the Cahaba River Fry Down (cahabariversociety.org) and the BAMAcross Brookside Rumble Bike Races (brooksidealabama.com). Fall is the best time of year to plant new shrubs and trees so make plans to shop the Birmingham Botanical Gardens Fall Plant Sale (bbgardens.org).</p>			



BROOKSIDE GREENWAY PARK

Five Mile Creek Watershed (Black Warrior Sub-Basin)

Learn more about Sub-Basins and Watersheds on last page!

Five Mile Creek offers 26 miles of Alabama's finest spring and early summer canoeing and kayaking with four primary paddling routes. Adjacent to Five Mile Creek is the beautiful Brookside Greenway Park which offers improved and primitive camping sites as well as a stunning array of bird habitats. Owned by the Town of Brookside, the Five Mile Creek Canoe Company rents paddling equipment, books tours, and reserves campground space. Shuttle services are available reservations required.

Attractions:

Canoeing and kayaking rentals; camping (shower and restrooms); playground, fishing, swimming, 4-miles of walking and birding trails

Special events:

Oct - bike race (BAM Across Brookside Rumble)
Nov - St. Nicholas Russian Food Festival

Biggest threat to the watershed:

Dumping of trash, tires, debris

Solutions Implemented:

Greenway, creekside buffers

Photo, Francesca Gross



Open daily dawn to dusk | 325 Cardiff Street, 35036 | 205-674-5550 | www.brooksidealabama.com

To report a sanitary sewer overflow call 205-942-0681.

Within the City of Birmingham call 311 to report environmental and drainage issues.

Within unincorporated Jefferson County call 205-325-5792 to report suspected water pollution; call 205-582-6555 to report illegal dumping.

NOVEMBER 2018

STORMWATER TIP: Properly dispose of your used cooking oil and grease for free!

Fats, oils and grease poured down drains build up in pipes causing backups in homes and overflows into storm drains, creeks, rivers and streams. Backups and overflows are costly to repair, smell bad, and look even worse.

New clean recycling containers are available for FREE at all Jefferson County collection centers. Visit www.jeffcoes.org to find a location near you.

Call 238-3876 for more information about Jefferson County's Household Cooking Oil and Grease Recycling Program.

SUNDAY	MONDAY	TUESDAY	WEDNESDAY	THURSDAY	FRIDAY	SATURDAY
				1	2	3
4 Daylight Savings Time Ends	5	6 Election Day	7	8	9	10
11 Veterans Day	12	13	14	15 America Recycles Day	16	17
18	19	20	21	22 Thanksgiving Day	23	24
25	26	27	28	29	30	
			<p>NOTES: Make plans to attend the St. Nicholas Russian Food Festival in Brookside. Visit www.brooksidealabama.com to learn more.</p> <p>If you fry a turkey this month, remember to recycle your used cooking oil. Visit www.jeffcoes.org to find list of oil recycling locations around Jefferson County.</p>			



AEC'S COMMUNITY RECYCLING CENTER

Village Creek Watershed (Black Warrior Sub-Basin)

Learn more about Sub-Basins and Watersheds on last page!

Have recycling needs? We've got solutions! The Community Recycling Center provides area residents an ongoing opportunity for recycling a variety of items. We also can help your business, school or event with on site and long term recycling options. The Community Recycling Center offers educational workshops, tours, and assistance with sustainability best practices. Alabama Environmental Council (AEC) is a statewide, non-profit leader engaging citizens toward sustainable living and environmental stewardship. Quickly learn where and how to recycle most items at www.recycAL.org.

Special Events:

April - Green Tie Affair

Biggest threat to the watershed:

Litter and illegal dumping

Solutions implemented:

Your donations will help expand our recycling capabilities throughout the metro area.

Photo, Charles Cleckler



Open Tuesday - Friday 10:00am - 2:00pm ; Saturday 9 - 4 | 4330 1st Avenue South, 35222 | 205-252-7581 | www.recycAL.org

To report a sanitary sewer overflow call 205-942-0681.

Within the City of Birmingham call 311 to report environmental and drainage issues.

Within unincorporated Jefferson County call 205-325-5792 to report suspected water pollution; call 205-582-6555 to report illegal dumping.

DECEMBER 2018

**STORMWATER TIP:
Properly dispose of your
used cooking oil and
grease for free!**

Rats, raccoons, opossums and other vermin will feed on any type of grease, oil or other food waste that you place uncovered outside your home.

Jefferson County offers free, convenient and easy household oil and grease recycling. Visit www.jeffcoes.org to find a collection center near you.

Call 238-3876 for more information about Jefferson County's Household Cooking Oil and Grease Recycling Program.

SUNDAY	MONDAY	TUESDAY	WEDNESDAY	THURSDAY	FRIDAY	SATURDAY
						1
2	3	4	5	6	7	8
9	10	11	12	13	14	15
16	17	18	19	20	21	22
23	24 Christmas Eve	25 Christmas Day	26	27	28	29
30	31 New Year's Eve		NOTES: Recycle your old electronics. Visit www.RecycAL.org to learn more.			



JEFFERSON
COUNTY
CONSERVATION
DISTRICT

The City of Birmingham and the Jefferson County Stormwater Programs are pleased to provide you with this 2018 Stormwater Calendar. Inside, you will find a collection of outdoor venues that reflect the history, diversity, and future of our region. Each month highlights a venue with a photo as well as a description of its unique features and attractions. The venues were chosen based upon their contributions to reducing pollution in stormwater runoff and improving water quality in local creeks and streams through their preservation, conservation, restoration, and education initiatives. We hope that this calendar will encourage you to visit the featured locations and experience the unique ways in which each portrays our past, shapes our future and contributes to our quality of life.

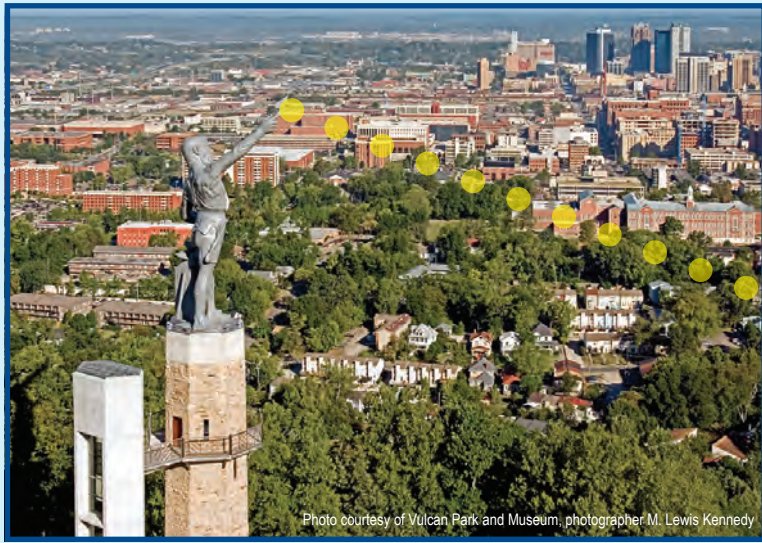
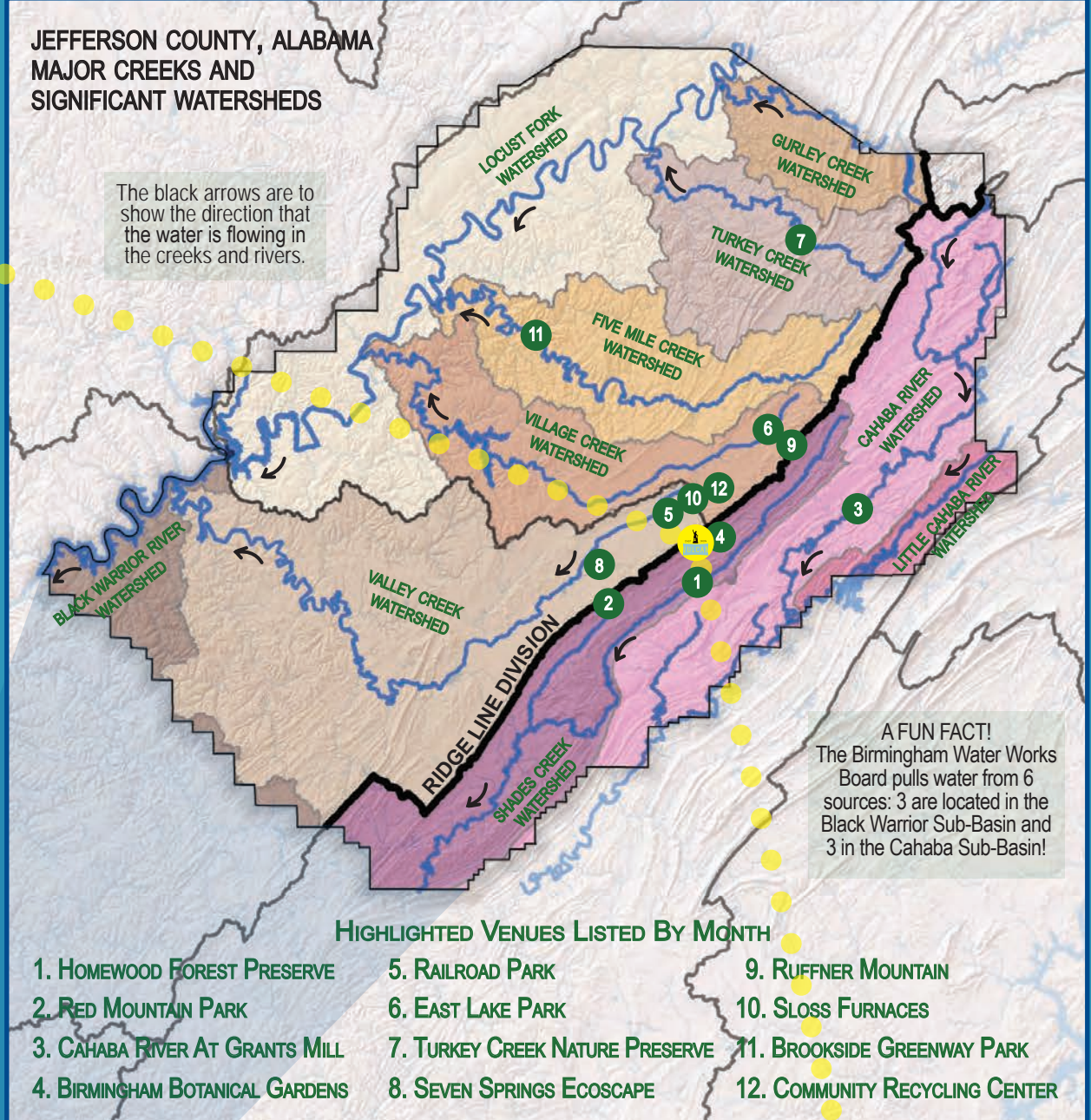
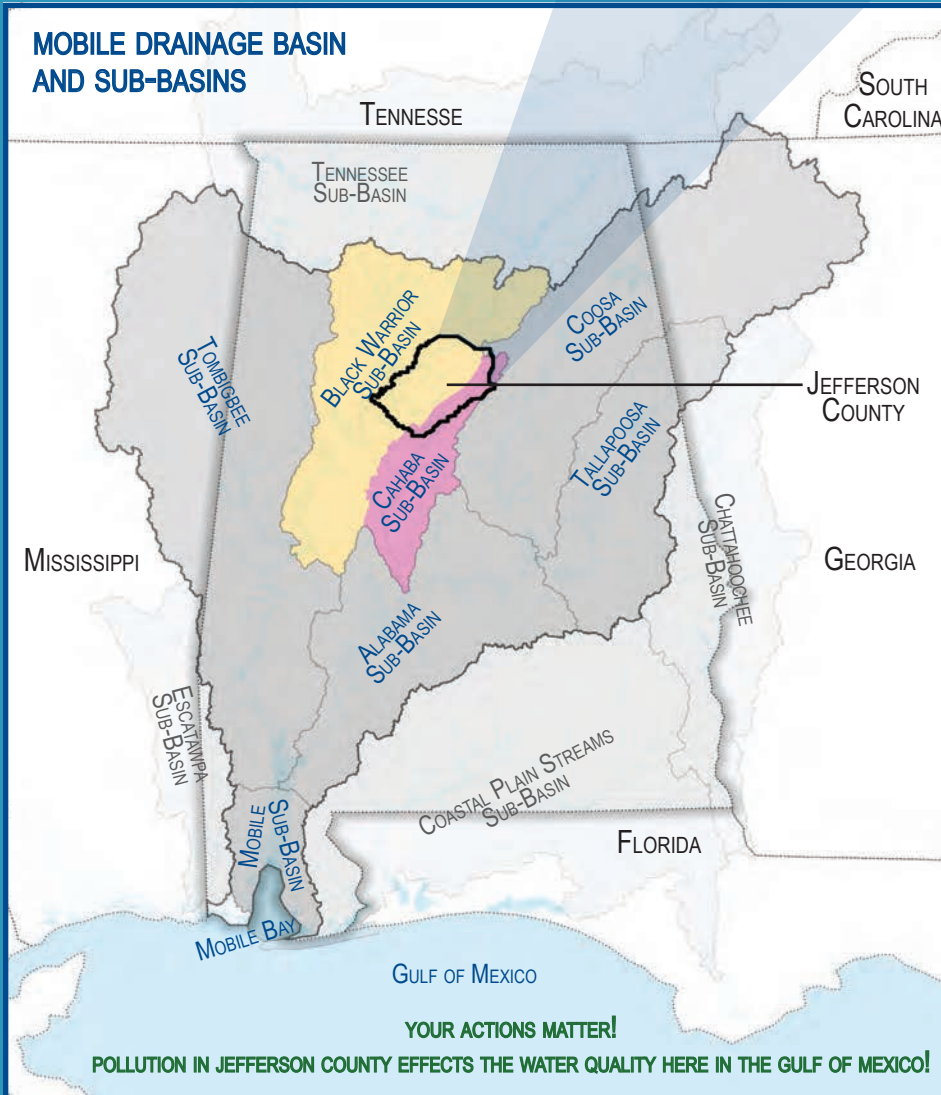


Photo courtesy of Vulcan Park and Museum, photographer M. Lewis Kennedy

Overlooking the sites where coal, iron ore and limestone were mined and a booming manufacturing sector was born, Vulcan proudly towers over the 1,119 square miles that make up the Birmingham-Jefferson County Metro Area. The abundance of clean fresh water was a crucial factor in Birmingham's dramatic rise as a mining and manufacturing center during the late 1800s. The water that enabled that growth remains a vital component to the future progress and vitality of our region. Vulcan Park sits atop Red Mountain, which is part of the Red Mountain Divide, a southern extension of the Appalachian Mountains and the Cumberland Plateau. This geological feature creates two main drainage Sub-Basins: the Black Warrior Sub-Basin and the Cahaba Sub-Basin. The Vulcan statue faces the Black Warrior Sub-Basin and the Cahaba Sub-Basin is behind Vulcan. Within these 2 major Sub-Basins are 10 Watersheds: Black Warrior River, Cahaba River, Five Mile Creek, Gurley Creek, Little Cahaba River, Shades Creek, Turkey Creek, Valley Creek, and Village Creek.



A drainage **BASIN** is a large area of land drained by rivers. Large Basins are made up of Sub-Basins. **SUB-BASINS** are made up of Watersheds. A **WATERSHED** is a land area whose elevation causes water to flow to a common waterway. Neither Basins nor Watersheds follow State or Municipal Boundaries. They are defined by mountain ridges and valleys.



VULCAN PARK AND MUSEUM

CAST IRON

VULCAN

PARK & MUSEUM
1701 Valley View Drive,
Birmingham, AL 35209
205-933-1409
www.visitvulcan.com

Vulcan Park and Museum was created to preserve and promote Vulcan as the symbol of the Birmingham region, to advance knowledge and understanding of Birmingham's history and culture, and to encourage exploration of the region. The Vulcan statue was built in 1904 as Birmingham's winning entry in the World's Fair held in St. Louis, Missouri. Vulcan, the world's largest cast iron statue standing at 56 feet tall, towers atop a pedestal with an observation deck which can be reached via 159 steps – or an elevator ride. The surrounding Vulcan Park is a 10 acre green space which includes walking trails and contains an interactive history museum. The park provides a spectacular 360° view of the surrounding area and is the site of the annual Fourth of July fireworks display, Thunder on the Mountain.

Did you know?

10% of the fresh water in the continental US originates or flows through Alabama in its 132,000 miles of streams!

Alabama contains the greatest aquatic biodiversity of all our 50 states with 332 species of freshwater fish!

Cahaba Sub-Basin contains the longest substantially free flowing river in Alabama - Cahaba River is #1!

Black Warrior Sub-Basin contains the 2nd and 3rd longest substantially free flowing rivers in Alabama - Locust Fork #2 and Mulberry Fork #3!

You can help gather important water quality data. Visit www.alabamawaterwatch.org to learn more!

The maps displayed on this page have been prepared by Jefferson County Department of Development Services. Any use of these maps shall be at the sole risk of the person or entity using them. Jefferson County makes no warranty, expressed or implied, as to the accuracy of the information represented herein. Source: Alabama Water Watch; Black Warrior River Watershed Management Plan; and United States Geological Survey's National Hydrography Dataset and Watershed Boundary Dataset

CITY OF BIRMINGHAM



**MAYOR RANDALL WOODFIN
COUNCILOR VALERIE ABBOTT
COUNCILOR JOHN HILLIARD
COUNCILOR STEVEN HOYT
COUNCILOR DARRELL O'QUINN
COUNCILOR WILLIAM PARKER
COUNCILOR JAY ROBERSON
COUNCILOR LASHUNDA SCALES
COUNCILOR SHEILA TYSON
COUNCILOR HUNTER WILLIAMS**

JEFFERSON COUNTY COMMISSION



**JAMES A. "JIMMIE" STEPHENS - PRESIDENT
SANDRA LITTLE BROWN - PRESIDENT PRO TEMPORE
GEORGE F. BOWMAN
DAVID CARRINGTON
T. JOE KNIGHT**